



Bryher House, Chiswick, W4 4HG

A nicely presented two-bedroomed first-floor apartment situated in this very popular residential road in the heart of Chiswick adjacent to the open spaces of Turnham Green. Chiswick High road is just moments away with its array of boutique shops and restaurants, main retailers include M&S, Waitrose, Sainsbury, Tesco, and The Co-op. The accommodation provides: spacious dual aspect 16'10 x 11'4 living room with sliding doors onto a private balcony, fitted modern kitchen, two double bedrooms with fitted wardrobes, modern bathroom with utility area, gas fired central heating, wood effect flooring throughout living areas. Local transport links include Chiswick Park, Turnham Green, and Gunnersbury Tube stations, numerous local bus routes with convenient vehicular access via A4/M4/A40 to central London, Heathrow & The West. Hounslow Council Tax Band D. The property is offered unfurnished and is available immediately

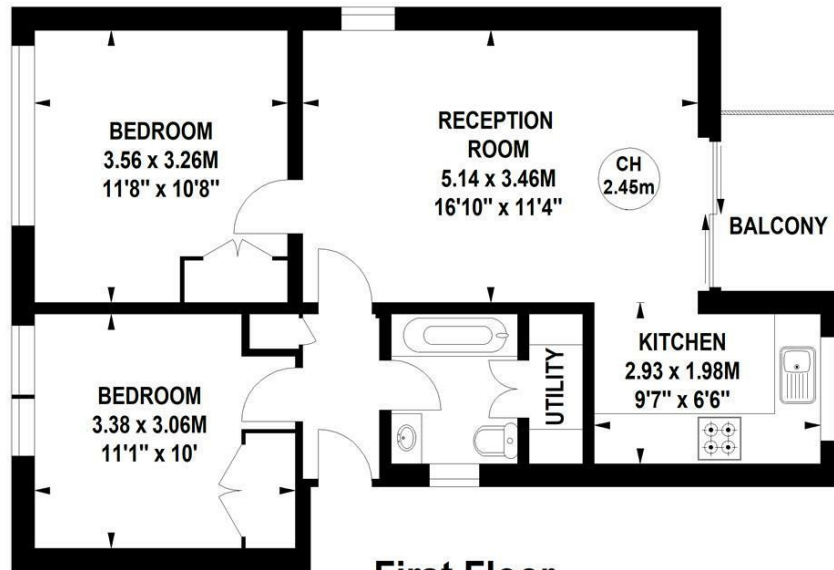
- Lovely Central Chiswick location
- Great for transport links
- Spacious dual aspect 16'10 x 11'4 living area
- Two double bedrooms with fitted wardrobes
- Fitted modern kitchen
- Bathroom with utility area
- Private balcony
- CPZ parking
- Offered unfurnished
- Available now

£2,200 Per Calendar Month

Bryher House, Walpole Gardens, W4

Key :
CH - Ceiling Height

Approximate gross internal area
56.20 sq m / 605 sq ft



First Floor

Not to scale, for guidance only and must not be relied upon as a statement of fact.
All measurements and areas are approximate only

Energy Efficiency Rating		
	Current	Potential
Very energy efficient - lower running costs		
(92 plus) A		
(81-91) B		
(69-80) C		
(55-68) D		
(39-54) E		
(21-38) F		
(1-20) G		
Not energy efficient - higher running costs		
England & Wales	EU Directive 2002/91/EC	

Environmental Impact (CO ₂) Rating		
	Current	Potential
Very environmentally friendly - lower CO ₂ emissions		
(92 plus) A		
(81-91) B		
(69-80) C		
(55-68) D		
(39-54) E		
(21-38) F		
(1-20) G		
Not environmentally friendly - higher CO ₂ emissions		
England & Wales	EU Directive 2002/91/EC	

5-7 Turnham Green Terrace, Chiswick, London, W4 1RG

Tel 020 8747 8800

E-mail lettings@whitmanandco.com

Website www.whitmanandco.com



MISREPRESENTATION ACT 1967

Whitman & Co. for themselves and for the vendors give notice that these particulars do not constitute any part of, an offer of contract. All statements contained in these particulars are made without responsibility on the part of Whitman & Co. or the vendor. None of the statements contained in these particulars is to be relied upon as statements or representations of facts. Any intending purchaser must satisfy himself by inspection or otherwise as to the correctness of each of the statements contained in these particulars. The vendor does not make or give, and neither Whitman & Co. or any person in their employment has any authority to make or give, any representation or warranty whatever in relation to the property.